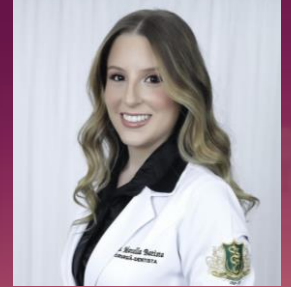




# Brushing and staining influence on esthetic properties of attachment composites



Marcella Batista Rocha<sup>1</sup>; Cesar Rogerio Pucci<sup>1</sup>; Alessandra Buhler Borges<sup>1</sup>; Carlos Rocha Gomes Torres<sup>1</sup>

<sup>1</sup> Department of Restorative Dentistry, Institute of Science and Technology, São Paulo State University, São José dos Campos, SP, Brazil.

All authors declare no conflicts of interest.

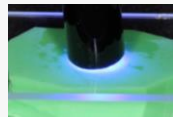
## AIM

The aim of this study was to evaluate the brushing and staining influence on esthetic and surface properties of resin composites indicated for aligner attachment.

## MATERIALS AND METHODS



GROUP 1 - AFLC  
Aligner Flow LC  
VOCO



GROUP 2 - GCAC  
Aligner Connect  
GC

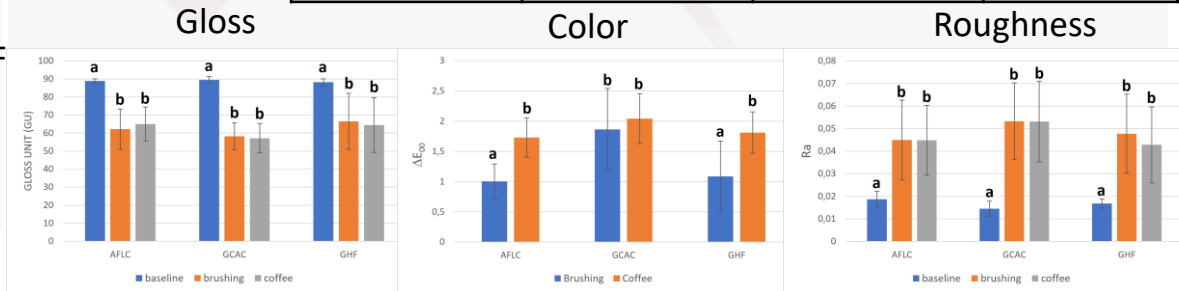


GROUP 3 - GHF  
Grandioso Heavy Flow  
VOCO



## RESULTS

	Gloss	Color	Roughness
Groups	P=0.296	P=0.003	P=0.559
Moment	P=0.032	P=0.001	P=0.107
Interaction	P=0.001	P=0.001	P=0.001



## CONCLUSIONS

The GCAC composite showed a higher color change than AFLC and GHF. The brushing reduced the gloss and increased the roughness in a similar way for all materials.