

On-the-spot transport media for the freshly biopsied soft tissue specimen


BACKGROUND

Universal Transport Media

Formalin

Quest for

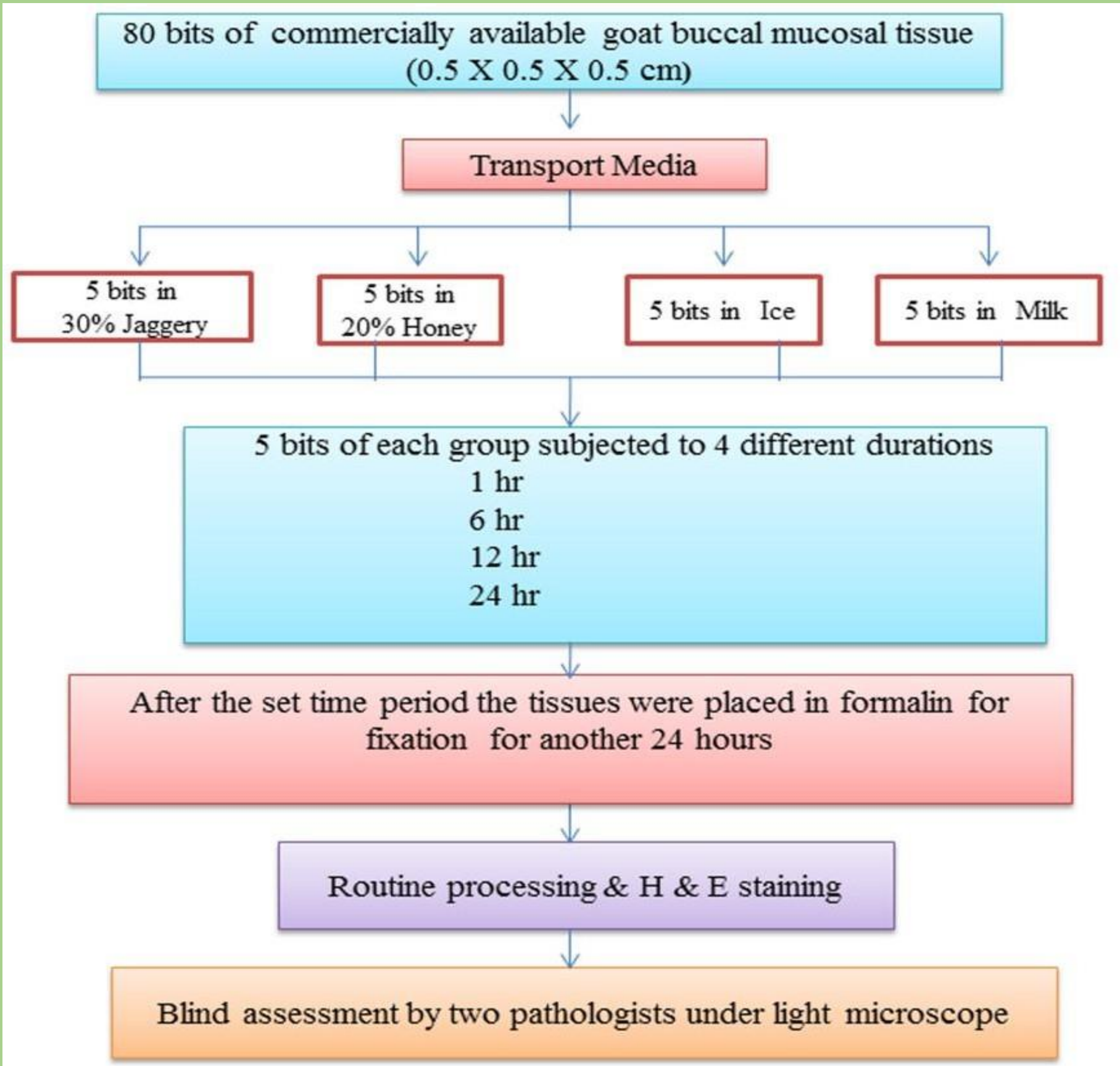
ON-THE-SPOT SUBSTITUTES ??????



OBJECTIVE

- To evaluate and compare the quality of the biopsied soft tissues preserved in various transport media at mentioned intervals (1 hr, 6 hr, 12 hr and 24 hr).

MATERIALS AND METHODS



TEST GROUPS



INTERPRETATION

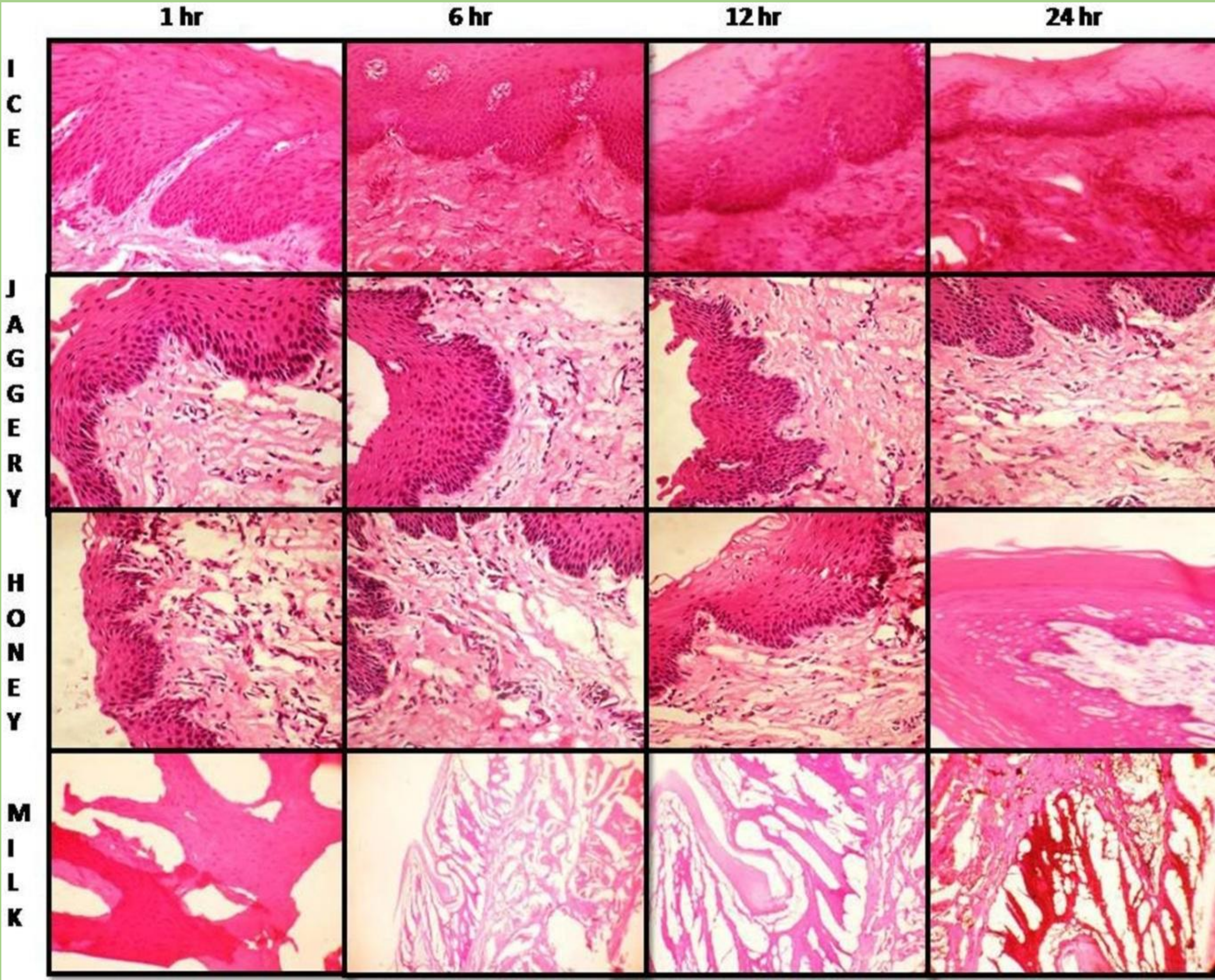
CRITERIA

- Cellular outline
- Cytoplasmic Details
- Nuclear Details
- Staining quality
- Overall Morphology

SCALE

- 1- Poor
- 2- Satisfactory
- 3- Good
- 4- Excellent

DISCUSSION



FEATURES	JAGGERY
DESCRIPTION	If pure clarified sugarcane juice is boiled, what is left as solid is jaggery.
TOTAL SUCROSE CONTENT	65- 85 %
WATER CONTENT	10- 12%
USAGE	Traditional Indian sweetener
AVAILABILITY	India, Pakistan, Mexico, South America, Burma, African countries, Srilanka, Thailand

JAGGERY A BREAKTHOUGH IN TRANSPORT MEDIA/FIXATION MEDIA!!!!!!

- ✓ Easily Available
- ✓ Non-toxic
- ✓ No problem of disposal
- ✓ Excellent clarity of tissues
- ✓ Compatible with routine processing and H&E staining

CONCLUSION

- ✓ Jaggery provided optimal tissue preservation, comparable to formalin fixed tissues
- ✓ We endorse the use of jaggery for transport media for freshly biopsied soft tissue specimens,

REFERENCES

- Patil S, Premalatha B R, Rao R S, Ganavi B S. Revelation in the Field of Tissue Preservation – A Preliminary Study on Natural Formalin Substitutes. J Int Oral Health 2013; 5(1):31-38.
- Patil S, Rao RS, Agarwal A, Raj AT. Instant transport media for biopsied soft tissue specimens: A comparative study. Scientifica. 2015 Feb 22;2015.
- Rahma AI-Maaini, Philip Bryant. Honey as an Alternative to Formalin in the demonstration of Connective Tissue Components. J Histotechnol. 2008; 31(2):67-72.